

# Network of the National Library of Medicine *All of Us* Program Center (U24)

Technical Assistance Webinar for RFA-LM-21-002

August 5, 2021

Presenters:

- Laura Bartlett, Project Scientist, Office of Engagement and Training
- Alan VanBiervliet, Program Director, Extramural Programs Division



National Library of Medicine

# Acronym and abbreviation guide

- NLM = National Library of Medicine
- NNLM = Network of the National Library of Medicine
- NIH = National Institutes of Health
- *All of Us* = the National Institutes of Health *All of Us* Research Program
- NAPC = the Network of the National Library of Medicine *All of Us* program, administered by the National Library of Medicine



# Topics that will be covered in this webinar

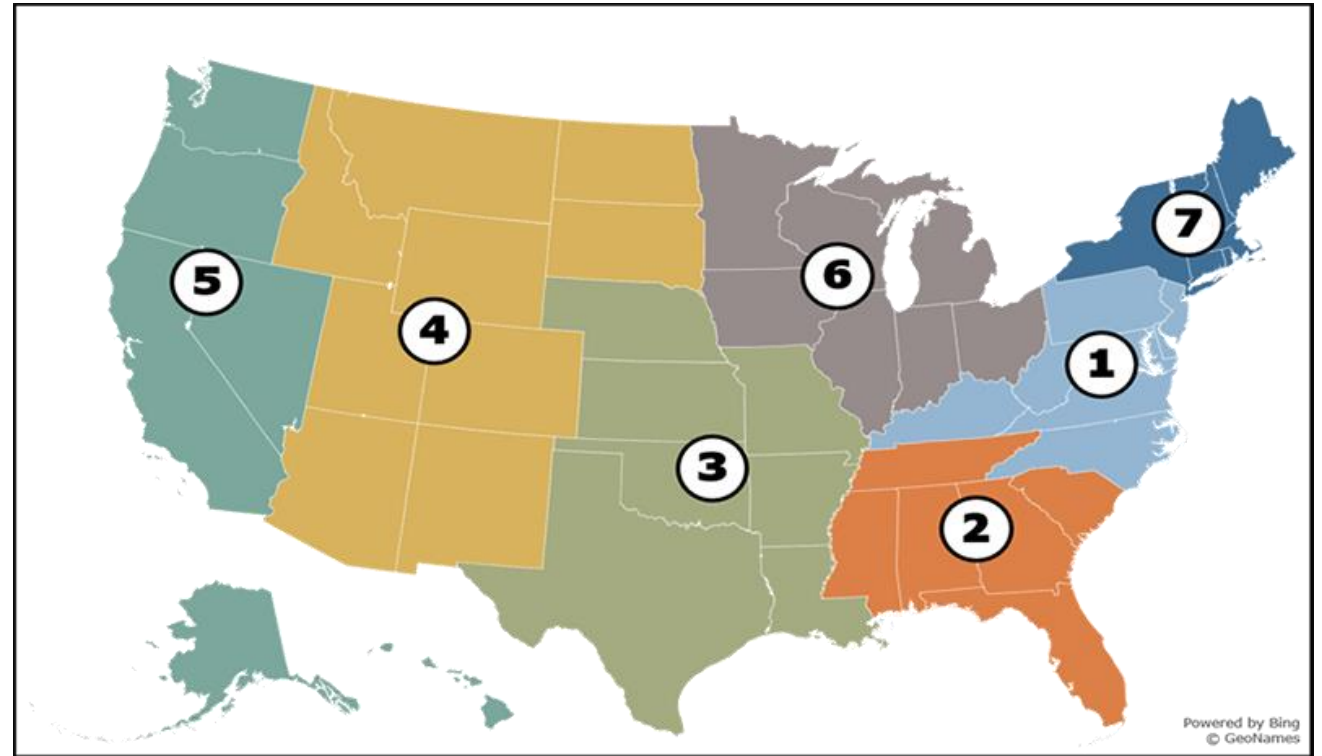
- Overview of the NNLM
- Overview of *All of Us*
- Examples of NNLM *All of Us* projects
- Planning and writing your application



# Network of the National Library of Medicine (NNLM)

<https://nnlm.gov>

- 7 geographical regions coordinated by 7 Health Sciences libraries called Regional Medical Libraries (RMLs)
- 8,000+ member Network
- Serves researchers, health professionals, public health workforce, educators, and the public



# Role of NNLM National Offices and Centers

- Center for Data Services (NCDS)
- Evaluation Center (NEC)
- Public Health Coordinating Office (NPHCO)
- Training Office (NTO)
- Web Services Office (NWSO)
  
- *All of Us* Community Engagement Center
- *All of Us* Training and Education Center



# NNLM *All of Us* National Program





# Underrepresented in Biomedical Research (UBR)

Diversity and inclusion are core values of the *All of Us* Research Program

- Race and Ethnicity
- Age
- Sex assignment at birth
- Sexual and Gender Minorities
- Income relative to the Federal poverty level
- Educational attainment
- Geography
- Access to care
- Physical or mental disability





# All of Us – Collaborative program partnerships



## Engagement Ecosystem

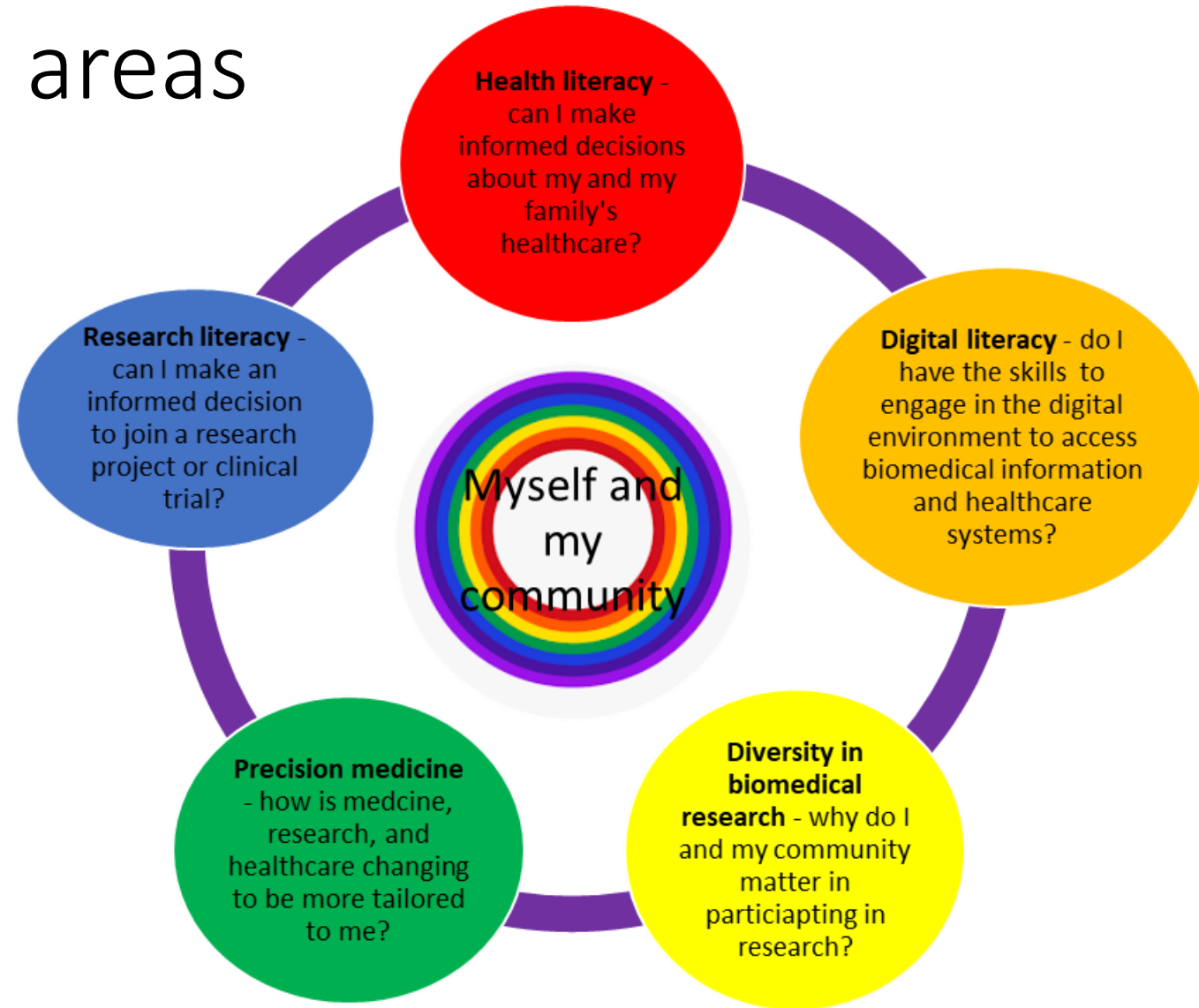
- National, regional, local health organizations
- Health care provider organizations
- Educational institutions
- Communication and media companies

For a list of *All of Us* partners,

visit: <https://allofus.nih.gov/funding-and-program-partners>

# NNLM *All of Us* focus areas

- Health literacy
- Digital literacy
- Precision medicine
- Diversity in biomedical research
- Research literacy (includes citizen science)



# NNLM *All of Us* Achievements

Available in Key Reports at the NNLM *All of Us* Workbook:

<https://nnlm.gov/workbook-allofus>

- Full engagement reports
- Summaries
- Recently published article



# Training and Education Platform and *All of Us* Consortium Training Courses

Training and Education Platform

1,200+ users

3,500+ course completions



*All of US* Consortium Training Courses

11 currently available,  
covering:

- General information
- Participant Interactions
- Biospecimens
- Technology
- Researcher Workbench

# Learn Internet Skills

<https://allofus.nlm.gov/learn-internet-skills>

Easy-to-use online education activity

In English and Español

- Get a free email address
- Avoid scams and phishing
- Create a strong and easy to remember password
- Find reliable health information online



# Virtual Health Programming

<https://allofus.nlm.gov/vhp>

## “Life Interrupted” film discussion

- Ecosystem partner moderator
- Streamed to Facebook and YouTube
- 5 “showings” completed March through April 2021

## “Becoming Dr Q” book club

- YouTube: 120 Peak Live Views
- Facebook Live: 104 Peak Live Views
- 15 partner organizations

All of Us  
RESEARCH PROGRAM



DANI MCCLAIN

NNLM READING CLUB PRESENTS...

**WE LIVE FOR THE WE**  
WITH DANI MCCLAIN  
SEPT 22, 2020  
3-4PM ET



ANDREA COLLIER



JOIN AUTHORS DANI MCCLAIN AND ANDREA COLLIER AS THEY DISCUSS MCCLAIN'S BOOK, *WE LIVE FOR THE WE: THE POLITICAL POWER OF BLACK MOTHERHOOD*.

View the event live at  
<https://youtu.be/Wvs2lhYGj0>



## “We Live For the We” book club

- Facebook Reach: 1051
- Twitter Impressions: 1417

NNLM Reading Club Presents...



ASK A QUESTION - WE ARE MONITORING COMMENTS DURING LIVESTREAM



WELL, IT TURNS OUT THAT IS MENTORS, FIRST OF ALL,

NIH National Library of Medicine

All of Us RESEARCH PROGRAM

37:30 / 56:31



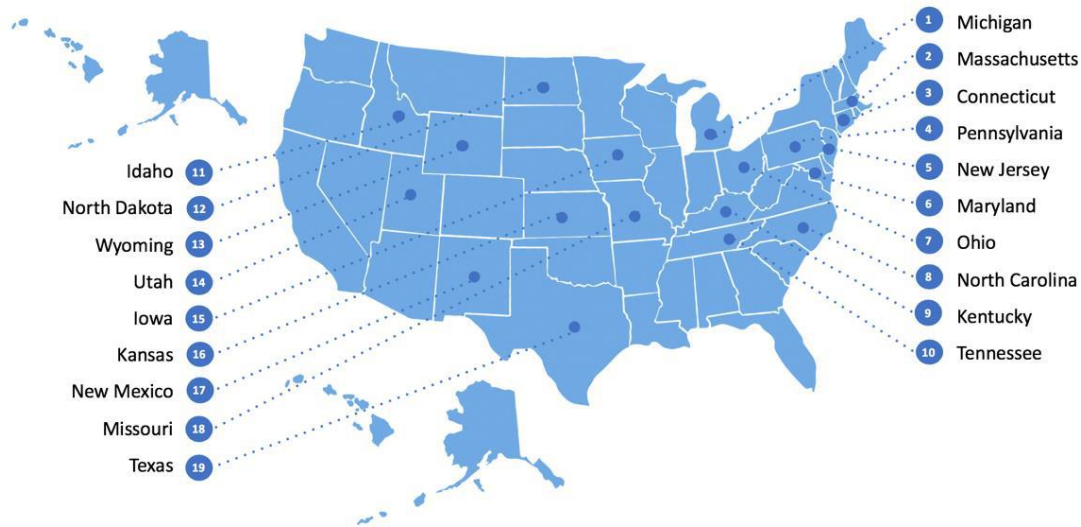
National Library of Medicine

# The Journey bus

<https://joinallofus.org/journey-and-events>

31 Libraries hosted

Across 19 states



# Key Resources

- *All of Us* National Research Program

<https://allofus.nih.gov/> (programmatic perspective)

<https://www.joinallofus.org/nlm> (participant perspective)

- NNLM *All of Us* Workbook

<https://nnlm.gov/workbook-allofus>

- Network of the National Library of Medicine

<https://nnlm.gov/>





# NAPC Milestones

- NAPC FOA Published: July 12, 2021
- Webinar: August 5, 2021
- Receipt Deadline: September 17, 2021
- Review: December 2021
- NLM Board of Regents Review: February 2022
- Final Funding Decision: February 2022
- Award negotiation/Notice of Award: March/April 2022
- Start date: May 1, 2022



# Cooperative Agreement Grant

- Partnership between NLM and Awardee. Flexible approach to achieving aims based on data collected and changes in science and technology
- Flexibility in budget modifications. No automatic carry over of funds between budget years
- Commonly used for resource development, research networks, and programs in support of NIH mission



# Cooperative Agreement Grant, cont.

Significant involvement by NIH staff as:

- Project Scientists and Project Coordinator (programmatic partners and advisors) (NLM OET staff)
- Program Director (grant stewardship) (NLM EP)
- Partnership with other NNLM Regional Medical Libraries, Offices, and Centers



# Planning is Critical



- Carefully study the funding opportunity announcement <https://grants.nih.gov/grants/guide/rfa-files/RFA-LM-21-002.html>  
(there are many links to important information)
- Carefully study the NNLM Workbook <https://nnlm.gov/workbook>
- Work with NNLM Regional Libraries, Offices, and Centers
- Work with Community Organizations and Minority Serving Institutions
- Work closely (make friends) with your Grants Office
- Work with colleagues who have experience with complex NIH applications
- Conduct a literature review: evidence-based approaches

# Staffing

- Principal Investigator provides scientific leadership in all aspects of the project.
- Include Biosketches for critical program staff, including PI/PD, Associate Director, and all staff who have a significant role in the planning and implementation of the program. They are all listed as Senior/Key Personnel
- You can also list and include Biosketches for Administrative leadership staff as well
- Amount of effort/time expressed as Person Months  
<https://nexus.od.nih.gov/all/2017/03/31/what-is-a-person-month-how-do-i-calculate-it/>
- Describe staff roles in Budget Justification section
- Consider project management as one of the important staff skills



# eRA Commons



The screenshot shows the top portion of the eRA Commons website. On the left is the eRA logo with the text "electronic Research Administration Office of Extramural Research". To the right are two green buttons: "Commons Login" and "ASSIST Login". Below these is a search bar labeled "Search this Site". A horizontal navigation bar contains links for HOME, APPLICANTS, GRANTEES, REVIEWERS, REGISTER | ACCOUNTS, and NEWS. Below this bar are links for HELP & TUTORIALS and ABOUT eRA. At the bottom of the screenshot, a breadcrumb trail reads "Home » Register in eRA Commons".

## Register in eRA Commons

A university or organization is required to register in eRA Commons to electronically submit a grant application. Only individuals with legal signing authority at the university or organization (e.g., CEO, Dean)—known as signing officials (SOs)—can register their organizations. Once the organization is registered, the SO can register or affiliate the principal investigator (PI) in Commons.

- NIH communication system with PIs and University Officials
- PI needs to have active eRA account, check this immediately
- Assistant to PI can also be assigned access to PI eRA account

# Use the Funding Opportunity Announcement to Guide Your Planning and Writing

- Responsibilities of the Community Engagement functional area:.....
- Training and education functional responsibilities include:.....
- Describe plans for the NAPC to:.....
- Plan and write the application with the Review Criteria (Section V) and peer reviewers in mind



# Budget

- The NAPC application is eligible to request **Facilities & Administration (Indirect) Costs** at the organization's federally approved Other Support Rate, typically at 30-40%
- All subawards are also eligible to request Facilities & Administration (Indirect) Costs





# Subawards/Consortium

- Subawards/consortium can be included in the NACP application
- Work with your grants office on what procedures you must follow at your university
- If you include a subaward it must include a standard NIH budget form, personnel time costs in calendar months, budget justification, and description of project, including how the project will be evaluated and how the NACP will provide stewardship for the project
- Subawardees are entitled to claim indirect costs
- You can also propose a community engagement type subaward program
- The NACP is responsible for ensuring subaward funds are spent appropriately, outcomes are being achieved, and subawards are properly managed



# Multiple PI Plan

[https://grants.nih.gov/grants/multi\\_pi/](https://grants.nih.gov/grants/multi_pi/)

- The multi-PD/PI option presents an important opportunity for investigators seeking support for projects or activities that require a team science approach
- Multiple PI applications require Leadership Plans that address the following administrative processes and PI responsibilities:
  - Roles/areas of responsibility of the PIs
  - Fiscal and management coordination
  - Process for making decisions on scientific direction and allocation of resources
  - Data sharing and communication among investigators
  - Publication and intellectual property policies (if needed)
  - Procedures for resolving conflicts



National Library of Medicine

# Letters of Support and Appendix

- These should be letters of commitment from individuals/organizations stating their willingness to commit staff time or other resources to achieve project aims. Combine all letters into a single PDF document for uploading into the application
- An **Appendix** is not allowed in the NAPC application



# Human Subjects Protection

- Human subject research is allowed with NAPC funding
- Clinical Trials are allowed within the funding mechanism
- Staff must complete human subject protection training according to their university guidelines. <https://grants.nih.gov/policy/humansubjects/training-and-resources.htm>
- Prior to including a human subject research proposal in your application contact Dr. Alan VanBiervliet at [alan.vanbiervliet@nih.gov](mailto:alan.vanbiervliet@nih.gov)



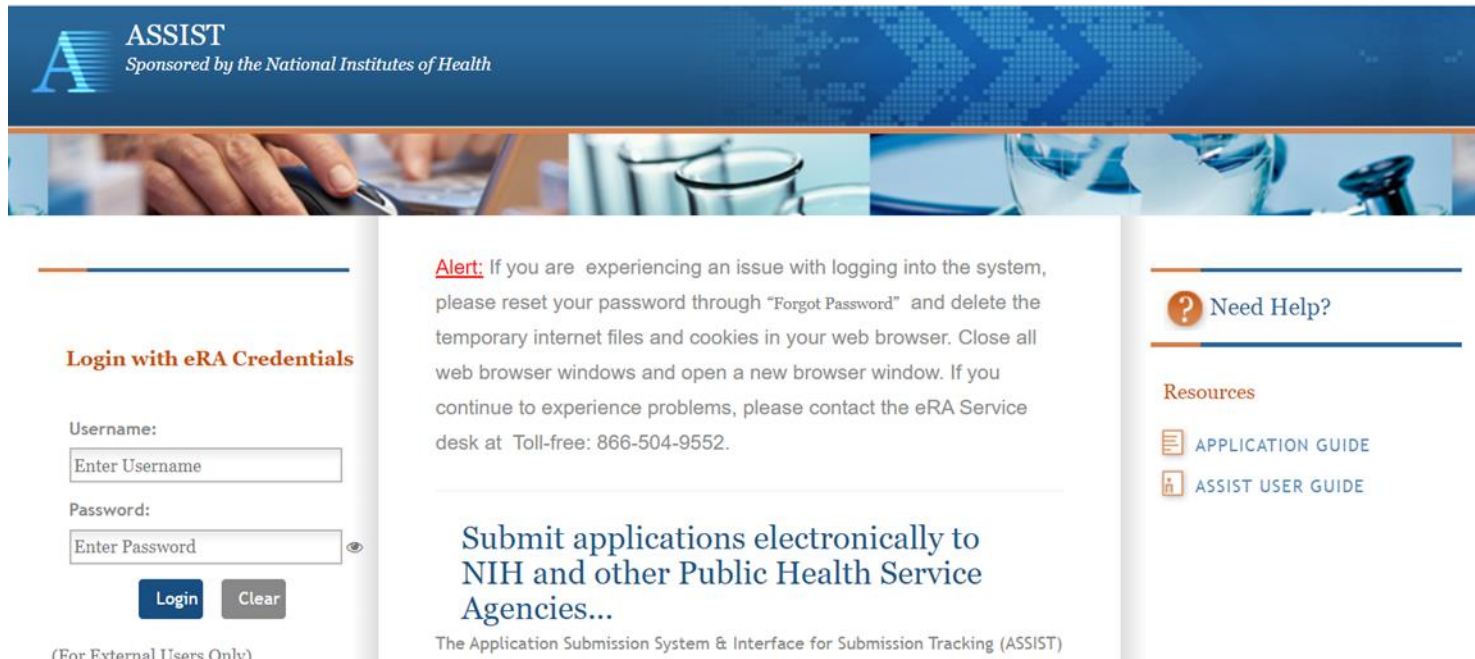
The screenshot shows the NIH Grants & Funding website. At the top, it identifies the U.S. Department of Health & Human Services and the National Institutes of Health. The main header features the NIH logo and the text "GRANTS & FUNDING" and "NIH Central Resource for Grants and Funding Information". A search bar is located in the top right corner. Below the header is a navigation menu with options: HOME, ABOUT GRANTS, FUNDING, POLICY & COMPLIANCE (which is highlighted with a green underline), and NEWS & EVENTS. A breadcrumb trail reads: Home » Policy & Compliance » Human Subjects » Training & Resources - Human Subjects. On the left side, there is a "POLICY & COMPLIANCE" section with a sub-section for "Policy Topics" containing "Human Subjects Research". The main content area is titled "Training & Resources - Human Subjects" and contains a paragraph: "The Office of Extramural Research (OER) provides training and communication tools such as web-based tutorials, presentations, and other resources to assist you in accessing and understanding information in determining if your research involves human subjects, may be exempt from federal regulations, or is not considered human subjects research."



# ASSIST and the Application Process

<https://public.era.nih.gov/assist/>

ASSIST is an online system that NIH applicants use to prepare and submit complex applications such as the NACP



**ASSIST**  
Sponsored by the National Institutes of Health

**Login with eRA Credentials**

Username:

Password:

(For External Users Only)

**Alert:** If you are experiencing an issue with logging into the system, please reset your password through "Forgot Password" and delete the temporary internet files and cookies in your web browser. Close all web browser windows and open a new browser window. If you continue to experience problems, please contact the eRA Service desk at Toll-free: 866-504-9552.

**Submit applications electronically to NIH and other Public Health Service Agencies...**

The Application Submission System & Interface for Submission Tracking (ASSIST)

**Need Help?**

**Resources**

- APPLICATION GUIDE
- ASSIST USER GUIDE



National Library of Medicine

# Contacts

## Program Questions

Alan VanBiervliet, MA PhD

National Library of Medicine (NLM)

Telephone: 301- 594-4882

Email: [alan.vanbiervliet@mail.nih.gov](mailto:alan.vanbiervliet@mail.nih.gov)

## Peer Review

Zoe Huang, MD

National Library of Medicine (NLM)

Telephone: 301-594-4937

Email: [huangz@mail.nih.gov](mailto:huangz@mail.nih.gov)

## Financial/Grants Management Contact

Samantha Tempchin

National Library of Medicine (NLM)

Telephone: 301-496-4221

Email: [tempchins@mail.nih.gov](mailto:tempchins@mail.nih.gov)



National Library of Medicine

# Q&A



Questions and Answers will be posted to:

<https://nnlm.gov/workbook-allofus>

Ask questions in the chat box

Send future questions to:

[alan.vanbiervliet@mail.nih.gov](mailto:alan.vanbiervliet@mail.nih.gov)

Program Director



# Thank You

Network of the National Library of Medicine *All of Us* Program Center  
(U24) RFA-LM-21-002

<https://grants.nih.gov/grants/guide/rfa-files/RFA-LM-21-002.html>

Due Date: September 17, 2021

Send future questions to: [alan.vanbiervliet@mail.nih.gov](mailto:alan.vanbiervliet@mail.nih.gov) , Program Director



National Library of Medicine