

**Middle Atlantic Region**

**Region 1**

**Annual Report**

**May 1, 2010 – April 30, 2011**

**New York University School of Medicine**

**Date submitted: July 13, 2011**

## TABLE OF CONTENTS

Executive summary_____	Page 2
Network infrastructure_____	Page 3
Outreach_____	Page 3
Site visits_____	Page 4
Web site use_____	Page 6
Attachment 1 – Tabular report of OARF activity data for contract year: RML staff activities	
Attachment 2 – Tabular report of OARF activity data for contract year: Subcontractor activities	
Attachment 3 – Region map: RML staff outreach activities	
Attachment 4 – Region map: Subcontracted outreach activities	
Attachment 5 – Region map: Outreach activities with significant number of minority participants (Combining RML and subcontractor activities)	
Attachment 6 – State map (New York): Network membership	
Attachment 7 – State map (Pennsylvania): Network membership	
Attachment 8 – State map (New Jersey): Network membership	
Attachment 9 – State map (Delaware): Network membership	
Attachment 10 – Report of Government Owned Contractor Held Property	

## Executive summary

### Outreach

MAR staff conducted 23 site visits distributed across the region in Year 5. MAR staffed 23 exhibits and developed or updated 13 courses, most of them online in the final year of the contract.

### Governance

MAR's Regional Advisory Committee met on March 24 and heard presentations on key projects funded in 2006-2011 and from NLM guest, Martha Fishel.

NLM announced in late April that the RML contract would move from New York University to the University of Pittsburgh in 2011-2016.

### Network Infrastructure

The number of full members fell by 27 in Year 5, while affiliate members grew by 26. The number of Libraries providing services to the public dropped by nine. The average fill rate for resource library dropped 2%.

### Network infrastructure

TABLE 1. Annual infrastructure data

	Current year 2010- 2011	Previous year 2009- 2010
Network members – full	434	461
Network members – affiliate	347	321
Libraries providing services to unaffiliated health professionals	199	208 (45%)*
Libraries providing services to public users	214	226 (49%)*
Average fill rate for resource libraries	82%	84%

\*Include in parentheses the percentage of full Network member members providing services to unaffiliated health professionals and public users. This can be computed as:  
% providing services = (count of libraries providing services)/(count of full Network members)

### Regional emergency preparedness planning

### Identifying unique and historical collections

### E-licensing

### EFTS

### Outreach

- Major (≥ \$15,000) projects funded in contract year: **2 total**
  - Quarter 1: 1; Quarter 2:1 ; Quarter 3: 0 ; Quarter 4: 0
- National exhibits conducted by RML: **6 total**
  - Q1: 3 = ; Q2 = 1 ; Q3= 2; Q4= 0
- National exhibits conducted by subcontractors: 0
- Regional/state/local exhibits conducted by RML: **13 total**
  - Q1 = 1 ; Q2 = 5; Q3= 4; Q4=3

- Regional/state/local exhibits conducted by subcontractors: 0
- Courses developed/updated by RML staff: [All webinars except where noted]: **13 total**
  - PubMed for the Rest of Us (Hunter)
  - Making PubMed Work for You
  - Keeping Up with NLM's PubMed
  - Measuring Your Impact
  - Combating Information Fatigue: Health Information Resources for Veterans
  - Public Health Information on the Web
  - Basic Nutrition Resources
  - Free Rural Health Information Resources
  - Resources for Disaster Response and Preparedness
  - Caring for the Mind: Providing Reference Services for Mental Health Information
  - Logic Models: An Introduction
  - Measuring Your Impact: Using Evaluation for Library Advocacy (in person)
  - Free Productivity tools

TABLE 2. Site visits

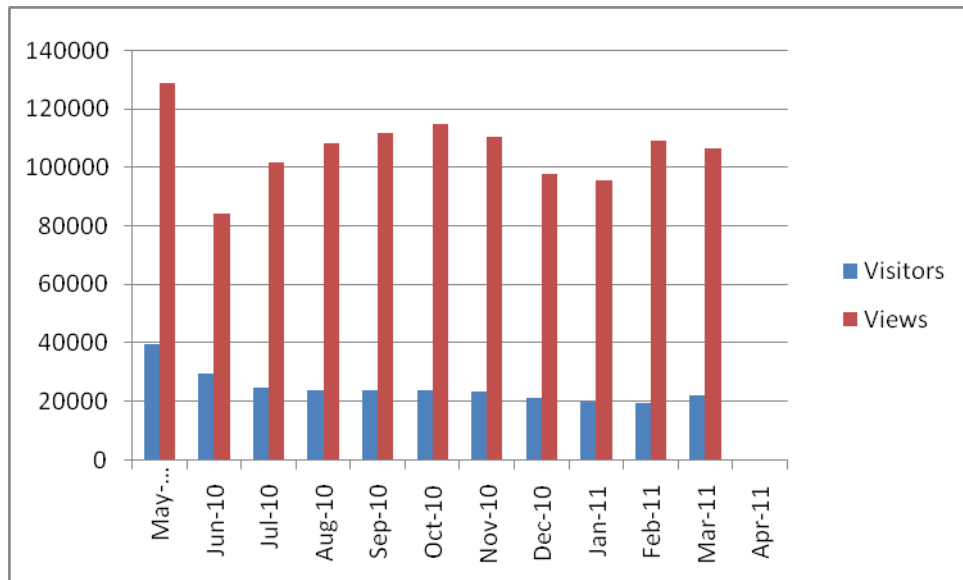
<b>Date</b>	<b>Last name of RML staff responsible</b>	<b>Institution</b>	<b>Location (city, state)</b>	<b>Topics addressed</b>
6/8/ 2010	Colleen Cuddy, NN/LM MAR Interim Director, and Kate Oliver	SUNY Downstate Health Science Library	Brooklyn, NY	RML Programs & Services
6/10/2010	Kate Oliver	Columbia University Health Science Library; Michael Koehn, Interim Director	NY, NY	MAR Outreach to Unaffiliated Health Professional (OUHP) Award
6/14/2010	Kate Oliver	Maxine Rockoff, Columbia University, consultant to the Institute for Family Health	NY, NY	Columbia University Health Sciences Library OUHP Award
7/1/2010	Kate Oliver	Diane Hauser, Institute for Family Health		Columbia University Health Sciences Library OUHP Award
7/21/10	Helen Tannenbaum	Stratton Albany VA hospital (NYUZCB)	Albany, NY	RML Programs & Services
7/21/10	Helen Tannenbaum	St. Peter's Hospital HSL(NYUSPN)	Albany, NY	RML Programs & Services
8/6/2010	Neil Romanosky and Kate Oliver	Health Sciences Library Association of New Jersey (HSLANJ) Board Retreat at Monmouth University	West Long Branch, NJ.	Reviewed Year 4 E-Consortium Award to HSLANJ. Presented an update on RML Programs & Services..
8/11/10	Helen Tannenbaum	St. Joseph's Hospital College of	Syracuse, NY	RML Programs & Services

		Nursing Library (NYUZUN)		
9/17/2010	Sue Hunter	Central Pennsylvania Health Sciences Library Association (CPHSLA)	Lebanon, PA	RML Programs & Services
9/29/2010	Neil Romanosky	Dottie Hiebing (Executive Director), Jason Kucsma (Emerging Technologies Manager), and Joan Napolitano (Hospital Library Services Program Manager) at the Metropolitan New York Library Council (METRO)	NY, NY	RML Programs & Services and METRO Services
10/15/2010	Neil Romanosky	The Commonwealth Medical College and Community Medical Center	Scranton, PA	RML Programs & Services
10/25/2010	Neil Romanosky	Magee Rehabilitation Hospital	Philadelphia, PA	RML Programs & Services
10/25/10	Helen Tannenbaum	Fox Chase Cancer Center Library(PAUICR)	Philadelphia, PA	RML Programs & Services
11/5/2010	Neil Romanosky	MAR funded Bioinformatics Training at the University of Pennsylvania; instructor Diane Rein, University at Buffalo, NY	Philadelphia, PA	Bioinformatics Training Award
11/2/2010	Kate Oliver	New York Academy of Medicine	NY, NY	MAR Historical Collections Award Application
12/6/2010	Neil Rambo	METRO HLSP Annual Meeting	NY, NY	NYU Proposal for 2011-2016
12/6/2010	Kate Oliver	METRO HLSP Annual Meeting	NY, NY	RML Update
12/9/2010	Neil Rambo & Kate Oliver	New York State Higher Education Initiative (NYSHEI)	Albany, NY	RML Services and Programs

12/17/2010	Neil Rambo, Kate Oliver	Institute for Family Health	NY, NY	MAR funded award "Evaluating MedlinePlus Connect"; Outreach to Unaffiliated Health Professionals (OUHP) project lead by Columbia's Health Sciences Library.
12/14/2010	MAR Staff	MAR Update for the MLA NYNJ Chapter Winter Newsletter	NY, NY; NJ	RML Update
1/21/11	Helen Tannenbaum	Mercy Hospital Library	Scranton, PA	RML Services and Programs
3/35/2011	Neil Rambo, Kate Oliver	New York Academy of Medicine	NY, NY	Historical Collections Award
4/5/2011	Helen Tannenbaum	BQSI e-consortium annual meeting	NY, NY	RML Services and Programs

**Web site use Year 5**

	Visitors	Views
May-10	<b>39746</b>	<b>129029</b>
Jun-10	<b>29657</b>	<b>84078</b>
Jul-10	<b>24607</b>	<b>101542</b>
Aug-10	<b>23922</b>	<b>108310</b>
Sep-10	<b>23847</b>	<b>111927</b>
Oct-10	<b>23764</b>	<b>114697</b>
Nov-10	<b>23375</b>	<b>110287</b>
Dec-10	<b>21203</b>	<b>97906</b>
Jan-11	<b>19834</b>	<b>95552</b>
Feb-11	<b>19275</b>	<b>109150</b>
Mar-11	<b>21982</b>	<b>106399</b>
Apr-11		



**Attachment 1**  
**Tabular report of OARF activity data for contract year:**  
**RML staff activities**



**Map Report: Outreach Activities Conducted by "RML" Staff in Region "1"  
("01-MAY-10 - 30-APR-11")**

**Activity Summary**

**Total Outreach**

Region 01 = 38.

**Total Number of Estimated Participants**

Region 01 = 590.

**Average Number of Participants Per Activity**

Region 01 = 16.

**Average Length in Hours**

Region 01 = 2.

**Under 1 Hour**

Region 01 = 1.

**Between 1 and 2 Hours**

Region 01 = 24.

**Over 2 Hours**

Region 01 = 13.

**Hands-On Practice**

Region 01 = 15.

**Conducted Remotely**

Region 01 = 5.

**Offering Continuing Education**

Region 01 = 14.

**Significant Number of Minorities**

**Type of Organization Involved**

**Health Sciences Library**

Region 01 = 32.

**Public Library**

Region 01 = 14.

**Government**

Region 01 = 3.

**Hospital**

Region 01 = 16.

**Clinical/Health Care**

**Academic**

Region 01 = 9.

**Community-Based**

Region 01 = 1.

**Faith-Based  
Public Health  
Other**

Region 01 = 1.

**Session Content**

**PubMed**

Region 01 = 21.

**MedlinePlus**

Region 01 = 17.

**ClinicalTrials**

Region 01 = 3.

**NCBI**

**NLM Gateway**

**TOXNET**

**Other Technology**

Region 01 = 10.

**Other Non-Technology**

Region 01 = 7.

**Significant Number of Minorities**

**African American**

**Alaska Native**

**Asian and Pacific Islander**

**Hispanic**

**Native American**

**Participant Summary**

**Completed Participant Information Sheet**

Region 01 = 354.

**Health Care or Service Provider**

Region 01 = 6.

**Health Science Library Staff**

Region 01 = 199.

**Public Health Worker**

Region 01 = 1.

**Public/Other Library Staff**

Region 01 = 110.

**General Public**

Region 01 = 40.

Generated: 2011-07-12

Funded By: NLM

Maintained By: OCCS GIS

---

**Attachment 2**

**Tabular report of OARF activity data for contract year:  
Subcontractor activities**



**Map Report: Outreach Activities Conducted by "SUB" Staff in Region "1"  
("01-MAY-10 - 30-APR-11")**

**Activity Summary**

**Total Outreach**

Region 01 = 61.

**Total Number of Estimated Participants**

Region 01 = 1,563.

**Average Number of Participants Per Activity**

Region 01 = 26.

**Average Length in Hours**

Region 01 = 1.

**Under 1 Hour**

Region 01 = 11.

**Between 1 and 2 Hours**

Region 01 = 47.

**Over 2 Hours**

Region 01 = 3.

**Hands-On Practice**

Region 01 = 10.

**Conducted Remotely**

Region 01 = 9.

**Offering Continuing Education**

Region 01 = 2.

**Significant Number of Minorities**

Region 01 = 8.

**Type of Organization Involved**

**Health Sciences Library**

Region 01 = 38.

**Public Library**

Region 01 = 8.

**Government**

Region 01 = 1.

**Hospital**

Region 01 = 14.

**Clinical/Health Care**

Region 01 = 12.

**Academic**

Region 01 = 39.

**Community-Based**

Region 01 = 16.

**Faith-Based**

Region 01 = 2.

**Public Health**

Region 01 = 3.

**Other**

Region 01 = 8.

**Session Content****PubMed**

Region 01 = 25.

**MedlinePlus**

Region 01 = 24.

**ClinicalTrials**

Region 01 = 16

**NCBI**

Region 01 = 14.

**NLM Gateway**

Region 01 = 11.

**TOXNET**

Region 01 = 2.

**Other Technology**

Region 01 = 48.

**Other Non-Technology**

Region 01 = 6

**Significant Number of Minorities****African American**

Region 01 = 4.

**Alaska Native****Asian and Pacific Islander**

Region 01 = 6.

**Hispanic**

Region 01 = 5.

**Native American****Participant Summary****Completed Participant Information Sheet**

Region 01 = 1,494.

**Health Care or Service Provider**

Region 01 = 1,309.

**Health Science Library Staff****Public Health Worker**

Region 01 = 16.

**Public/Other Library Staff**

Region 01 = 10.

**General Public**

Region 01 = 159.

Generated: 2011-07-12  
Funded By: NLM  
Maintained By: OCCS GIS

**Attachment 3  
Region map:  
RML Staff Outreach Activities**

[NN/LM Intranet](#) | [NOMC Intranet](#) | [Outreach Activity](#) | [OARF](#) | [OPD/CHOS](#) | [Project Database](#)



**National Outreach Mapping Center** 2.1 (2011) [Contact](#) | [Feedback](#)

Today:  
2011/07/12th



Outreach Activity: RML Led | Period: RML Contract Year - 2010-11 (01-may-10 30-apr-11) | Aspect: Outreach Activity | Region: Where Activity Occurred - 1 | Geography: State

[Outreach Project Context](#)

**Activity**

[All RML Led](#)  
[Sub-Contractor Led](#)

**[-] Period**  
[All](#)

**Calendar Year**

[2001](#) [2002](#)  
[2003](#) [2004](#)  
[2005](#) [2006](#)  
[2007](#) [2008](#)  
[2009](#) [2010](#)  
[2011](#)

**NLM Fiscal Year**

[2001-02](#) [2002-03](#) [2003-04](#)  
[2004-05](#) [2005-06](#) [2006-07](#)  
[2007-08](#) [2008-09](#) [2009-10](#)  
[2010-11](#)

**NLM Quarter**

2001-02 [Q1](#) [Q2](#)  
[Q3](#) [Q4](#)  
2002-03 [Q1](#) [Q2](#)  
[Q3](#) [Q4](#)  
2003-04 [Q1](#) [Q2](#)  
[Q3](#) [Q4](#)  
2004-05 [Q1](#) [Q2](#)  
[Q3](#) [Q4](#)  
2005-06 [Q1](#) [Q2](#)  
[Q3](#) [Q4](#)  
2006-07 [Q1](#) [Q2](#)  
[Q3](#) [Q4](#)  
2007-08 [Q1](#) [Q2](#)  
[Q3](#) [Q4](#)  
2008-09 [Q1](#) [Q2](#)  
[Q3](#) [Q4](#)  
2009-10 [Q1](#) [Q2](#)  
[Q3](#) [Q4](#)  
2010-11 [Q1](#) [Q2](#)  
[Q3](#) [Q4](#)

**RML 5-Year Contract**

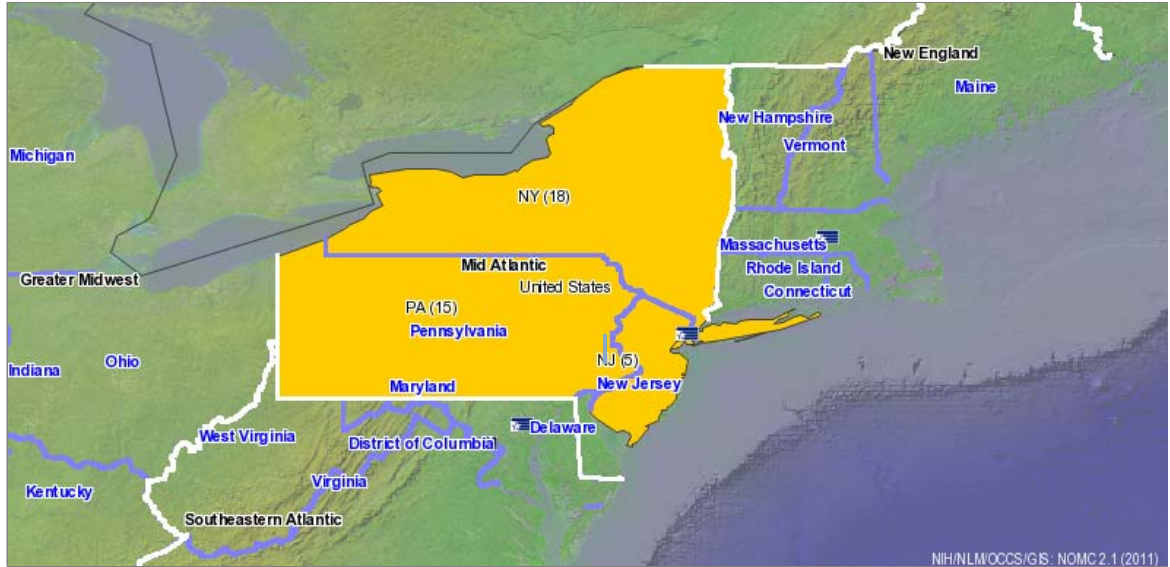
[2001-06](#) [2006-11](#) [2011-16](#)

**RML Contract Year**

[2001-02](#) [2002-03](#) [2003-04](#)  
[2004-05](#) [2005-06](#) [2006-07](#)  
[2007-08](#) [2008-09](#) [2009-10](#)  
[2010-11](#)

**RML Quarter**

2001-02 [Q1](#) [Q2](#)  
[Q3](#) [Q4](#)  
2002-03 [Q1](#) [Q2](#)  
[Q3](#) [Q4](#)  
2003-04 [Q1](#) [Q2](#)



[US Contiguous US](#) | [Region 1](#) [Region 2](#) [Region 2 - PR/VI](#) [Region 3](#) [Region 4](#) [Region 5](#) [Region 6](#) [Region 6 - AK](#) [Region 7](#) [Region 7 - HI](#) [Region 7 - PB1](#)  
[Region 7 - PB2](#) [Region 8](#) | [NLM RML 1](#) [RML 2](#) [RML 3](#) [RML 4](#) [RML 5](#) [RML 6](#) [RML 7](#) [RML 8](#) | MD | [Map](#)

1 - 20 | 21 - 60 | 61 - 140 | 141 or More |

Comment

Navigation: Left-click and drag bottom-right to zoom-in  
Features: Compatible with Internet Explorer 7 or Higher, or Firefox 3 or Higher

[Q3 Q4](#)  
 2004-05 [Q1](#) [Q2](#)  
[Q3 Q4](#)  
 2005-06 [Q1](#) [Q2](#)  
[Q3 Q4](#)  
 2006-07 [Q1](#) [Q2](#)  
[Q3 Q4](#)  
 2007-08 [Q1](#) [Q2](#)  
[Q3 Q4](#)  
 2008-09 [Q1](#) [Q2](#)  
[Q3 Q4](#)  
 2009-10 [Q1](#) [Q2](#)  
[Q3 Q4](#)  
 2010-11 [Q1](#) [Q2](#)  
[Q3 Q4](#)

#### **[ - ] Aspect**

[Session](#)  
[Content](#)  
[ClinicalTrials](#)  
[MedlinePlus](#)  
[NCBI NLM](#)  
[Gateway](#) [Other](#)  
[Technology](#)  
[Other Non-Technology](#)  
[PubMed](#)  
[TOXNET](#)

[Organization Involved](#)  
[Academic](#)  
[Clinic/Health Care](#)  
[Community-Based](#)  
[Faith-Based](#)  
[Government](#)  
[Health Sciences](#)  
[Library](#)  
[Hospital](#) [Other](#)  
[Public Health](#)  
[Public Library](#)

[Significant Number of Minorities](#)

[Total Outreach](#)

#### **Region**

[Responsible](#)  
[1](#) [2](#) [3](#) [4](#) [5](#) [6](#) [7](#) [8](#)

[Where Activity Occurred](#)  
[All](#) [1](#) [2](#) [3](#) [4](#) [5](#) [6](#)  
[7](#) [8](#)

#### **Geography**

[ZIP](#) [County](#)  
[Congressional District](#) [State](#)  
[Region](#)

[Map HowTo](#), [Map Report HowTo](#),  
[Map Archives](#),  
[General Metadata](#),  
[FGDC Metadata](#),  
[Description](#),  
[Sample Print](#),  
[Adobe Reader](#),  
[Adobe Flash Player](#)

Funded By: NLM  
 Maintained By: OCCS GIS

**Attachment 5**  
**Region map:**  
**Outreach Activities with Significant Number of Minorities**

[NN/LM Intranet](#) | [NOMC Intranet](#) | [Outreach Activity](#) | [OARF](#) | [OPD/CHOS](#) | [Project Database](#)



**National Outreach Mapping Center** 2.1 (2011) [Contact](#) | [Feedback](#)

Today:  
2011/07/12th



Outreach Activity: Sub-Contractor Led | Period: RML Contract Year - 2010-11 (01-may-10 30-apr-11) | Aspect: Outreach Activity | Region: Responsible - 1 | Geography: State

[Outreach Project Context](#)

**Activity**

[All RML Led](#)  
[Sub-Contractor Led](#)

**[-] Period**  
[All](#)

**Calendar Year**

[2001](#) [2002](#)  
[2003](#) [2004](#)  
[2005](#) [2006](#)  
[2007](#) [2008](#)  
[2009](#) [2010](#)  
[2011](#)

**NLM Fiscal Year**

[2001-02](#) [2002-03](#) [2003-04](#)  
[2004-05](#) [2005-06](#) [2006-07](#)  
[2007-08](#) [2008-09](#) [2009-10](#)  
[2010-11](#)

**NLM Quarter**

2001-02 [Q1](#) [Q2](#)  
[Q3](#) [Q4](#)  
2002-03 [Q1](#) [Q2](#)  
[Q3](#) [Q4](#)  
2003-04 [Q1](#) [Q2](#)  
[Q3](#) [Q4](#)  
2004-05 [Q1](#) [Q2](#)  
[Q3](#) [Q4](#)  
2005-06 [Q1](#) [Q2](#)  
[Q3](#) [Q4](#)  
2006-07 [Q1](#) [Q2](#)  
[Q3](#) [Q4](#)  
2007-08 [Q1](#) [Q2](#)  
[Q3](#) [Q4](#)  
2008-09 [Q1](#) [Q2](#)  
[Q3](#) [Q4](#)  
2009-10 [Q1](#) [Q2](#)  
[Q3](#) [Q4](#)  
2010-11 [Q1](#) [Q2](#)  
[Q3](#) [Q4](#)

**RML 5-Year Contract**

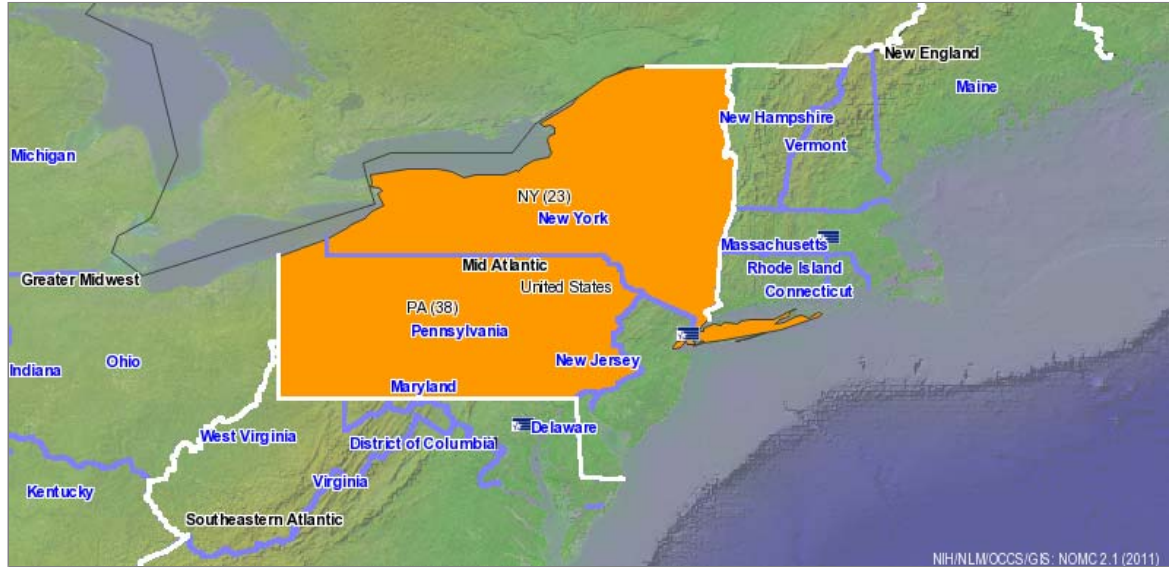
[2001-06](#) [2006-11](#) [2011-16](#)

**RML Contract Year**

[2001-02](#) [2002-03](#) [2003-04](#)  
[2004-05](#) [2005-06](#) [2006-07](#)  
[2007-08](#) [2008-09](#) [2009-10](#)  
[2010-11](#)

**RML Quarter**

2001-02 [Q1](#) [Q2](#)  
[Q3](#) [Q4](#)  
2002-03 [Q1](#) [Q2](#)  
[Q3](#) [Q4](#)  
2003-04 [Q1](#) [Q2](#)



[US Contiguous US](#) | [Region 1](#) [Region 2](#) [Region 2 - PR/VI](#) [Region 3](#) [Region 4](#) [Region 5](#) [Region 6](#) [Region 6 - AK](#) [Region 7](#) [Region 7 - HI](#) [Region 7 - PB1](#)  
[Region 7 - PB2](#) [Region 8](#) | [NLM RML 1](#) [RML 2](#) [RML 3](#) [RML 4](#) [RML 5](#) [RML 6](#) [RML 7](#) [RML 8](#) | MD | [Map](#)

1 - 20 | 21 - 60 | 61 - 140 | 141 or More |

Comment

Navigation: Left-click and drag bottom-right to zoom-in  
Features: Compatible with Internet Explorer 7 or Higher, or Firefox 3 or Higher

[Q3 Q4](#)  
 2004-05 [Q1](#) [Q2](#)  
[Q3 Q4](#)  
 2005-06 [Q1](#) [Q2](#)  
[Q3 Q4](#)  
 2006-07 [Q1](#) [Q2](#)  
[Q3 Q4](#)  
 2007-08 [Q1](#) [Q2](#)  
[Q3 Q4](#)  
 2008-09 [Q1](#) [Q2](#)  
[Q3 Q4](#)  
 2009-10 [Q1](#) [Q2](#)  
[Q3 Q4](#)  
 2010-11 [Q1](#) [Q2](#)  
[Q3 Q4](#)

#### **[ - ] Aspect**

[Session](#)  
[Content](#)  
[ClinicalTrials](#)  
[MedlinePlus](#)  
[NCBI NLM](#)  
[Gateway](#) [Other](#)  
[Technology](#)  
[Other Non-Technology](#)  
[PubMed](#)  
[TOXNET](#)

[Organization Involved](#)  
[Academic](#)  
[Clinic/Health Care](#)  
[Community-Based](#)  
[Faith-Based](#)  
[Government](#)  
[Health Sciences](#)  
[Library](#)  
[Hospital](#) [Other](#)  
[Public Health](#)  
[Public Library](#)

[Significant Number of Minorities](#)

[Total Outreach](#)

#### **Region**

[Responsible](#)  
[1](#) [2](#) [3](#) [4](#) [5](#) [6](#) [7](#) [8](#)

[Where Activity Occurred](#)  
[All](#) [1](#) [2](#) [3](#) [4](#) [5](#) [6](#)  
[7](#) [8](#)

#### **Geography**

[ZIP](#) [County](#)  
[Congressional District](#) [State](#)  
[Region](#)

[Map HowTo](#), [Map Report HowTo](#),  
[Map Archives](#),  
[General Metadata](#),  
[FGDC Metadata](#),  
[Description](#),  
[Sample Print](#),  
[Adobe Reader](#),  
[Adobe Flash Player](#)

Funded By: NLM  
 Maintained By: OCCS GIS

**Attachment 5**  
**Region map:**  
**Outreach Activities with Significant Number of Minorities**

[NN/LM Intranet](#) | [NOMC Intranet](#) | [Outreach Activity](#) | [OARF](#) | [OPD/CHOS](#) | [Project Database](#)



**National Outreach Mapping Center** 2.1 (2011) [Contact](#) | [Feedback](#)

Today:  
2011/07/12th



Outreach Activity: All | Period: RML Contract Year - 2010-11 (01-may-10 30-apr-11) | Aspect: More than 50% Minority Presence | Region: Responsible - 1 | Geography: State

[Outreach Project Context](#)

**Activity**

[All RML Led](#)  
[Sub-Contractor Led](#)

**[-] Period**  
[All](#)

**Calendar Year**  
[2001](#) [2002](#)  
[2003](#) [2004](#)  
[2005](#) [2006](#)  
[2007](#) [2008](#)  
[2009](#) [2010](#)  
[2011](#)

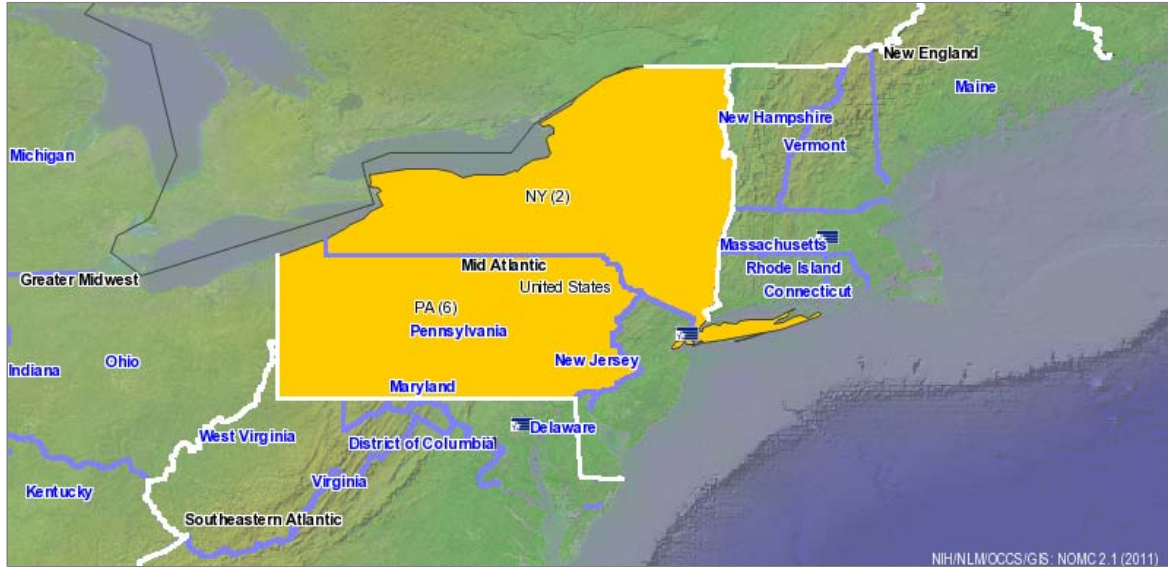
**NLM Fiscal Year**  
[2001-02](#) [2002-03](#) [2003-04](#)  
[2004-05](#) [2005-06](#) [2006-07](#)  
[2007-08](#) [2008-09](#) [2009-10](#)  
[2010-11](#)

**NLM Quarter**  
2001-02 [Q1](#) [Q2](#)  
[Q3](#) [Q4](#)  
2002-03 [Q1](#) [Q2](#)  
[Q3](#) [Q4](#)  
2003-04 [Q1](#) [Q2](#)  
[Q3](#) [Q4](#)  
2004-05 [Q1](#) [Q2](#)  
[Q3](#) [Q4](#)  
2005-06 [Q1](#) [Q2](#)  
[Q3](#) [Q4](#)  
2006-07 [Q1](#) [Q2](#)  
[Q3](#) [Q4](#)  
2007-08 [Q1](#) [Q2](#)  
[Q3](#) [Q4](#)  
2008-09 [Q1](#) [Q2](#)  
[Q3](#) [Q4](#)  
2009-10 [Q1](#) [Q2](#)  
[Q3](#) [Q4](#)  
2010-11 [Q1](#) [Q2](#)  
[Q3](#) [Q4](#)

**RML 5-Year Contract**  
[2001-06](#) [2006-11](#) [2011-16](#)

**RML Contract Year**  
[2001-02](#) [2002-03](#) [2003-04](#)  
[2004-05](#) [2005-06](#) [2006-07](#)  
[2007-08](#) [2008-09](#) [2009-10](#)  
[2010-11](#)

**RML Quarter**  
2001-02 [Q1](#) [Q2](#)  
[Q3](#) [Q4](#)  
2002-03 [Q1](#) [Q2](#)  
[Q3](#) [Q4](#)  
2003-04 [Q1](#) [Q2](#)



[US Conterminous US](#) | [Region 1](#) [Region 2](#) [Region 2 - PR/VI](#) [Region 3](#) [Region 4](#) [Region 5](#) [Region 6](#) [Region 6 - AK](#) [Region 7](#) [Region 7 - HI](#) [Region 7 - PB1](#)  
[Region 7 - PB2](#) [Region 8](#) | [NLM RML 1](#) [RML 2](#) [RML 3](#) [RML 4](#) [RML 5](#) [RML 6](#) [RML 7](#) [RML 8](#) | MD | [Map](#)

1 - 20 | 21 - 60 | 61 - 140 | 141 or More |

Comment

Navigation: Left-click and drag bottom-right to zoom-in  
Features: Compatible with Internet Explorer 7 or Higher, or Firefox 3 or Higher

[Q3 Q4](#)  
 2004-05 [Q1](#) [Q2](#)  
[Q3 Q4](#)  
 2005-06 [Q1](#) [Q2](#)  
[Q3 Q4](#)  
 2006-07 [Q1](#) [Q2](#)  
[Q3 Q4](#)  
 2007-08 [Q1](#) [Q2](#)  
[Q3 Q4](#)  
 2008-09 [Q1](#) [Q2](#)  
[Q3 Q4](#)  
 2009-10 [Q1](#) [Q2](#)  
[Q3 Q4](#)  
 2010-11 [Q1](#) [Q2](#)  
[Q3 Q4](#)

#### **[ - ] Aspect**

[Session](#)  
[Content](#)  
[ClinicalTrials](#)  
[MedlinePlus](#)  
[NCBI NLM](#)  
[Gateway](#) [Other](#)  
[Technology](#)  
[Other Non-Technology](#)  
[PubMed](#)  
[TOXNET](#)

[Organization Involved](#)  
[Academic](#)  
[Clinic/Health Care](#)  
[Community-Based](#)  
[Faith-Based](#)  
[Government](#)  
[Health Sciences](#)  
[Library](#)  
[Hospital](#) [Other](#)  
[Public Health](#)  
[Public Library](#)

[Significant Number of Minorities](#)

[Total Outreach](#)

#### **Region**

[Responsible](#)  
[1](#) [2](#) [3](#) [4](#) [5](#) [6](#) [7](#) [8](#)

[Where Activity Occurred](#)  
[All](#) [1](#) [2](#) [3](#) [4](#) [5](#) [6](#)  
[7](#) [8](#)

#### **Geography**

[ZIP](#) [County](#)  
[Congressional District](#) [State](#)  
[Region](#)

[Map HowTo](#), [Map Report HowTo](#),  
[Map Archives](#),  
[General Metadata](#),  
[FGDC Metadata](#),  
[Description](#),  
[Sample Print](#),  
[Adobe Reader](#),  
[Adobe Flash Player](#)

Funded By: NLM  
 Maintained By: OCCS GIS

**Attachment 6**  
**State Map: New York**  
**Network Membership**



# National Outreach Mapping Center 2.1 (2011) [Contact](#) | [Feedback](#)

Today:  
2011/07/12th



Context: Network Member | Geography: County

[Outreach Project Context](#)

**[ - ] Context**  
[Medically Underserved](#)

[Health Professional Shortage](#)

[Major Health Department](#)

[Network Member](#)

[Public Library Network Member](#)

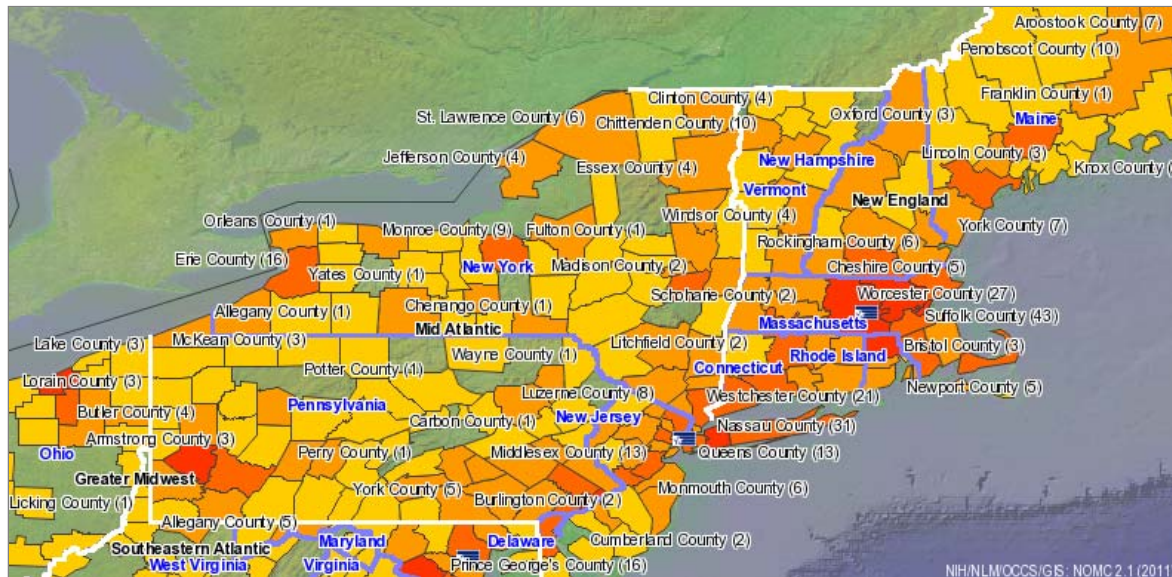
Census Population (1 Race)  
African American # %  
American Indian and Alaska Native # %  
Asian # %  
Caucasian # %  
Hispanic # %  
Native Hawaiian and Pacific Islander # %  
Other # %

Census Population More than 1 Race # %  
Rural # %  
Urban # %

Census Population (Age)  
Less than 17 Years # %  
Between 18-64 Years # %  
More than 65 Years # %

**Geography**  
[ZIP](#) [County](#)

[Map HowTo](#), [Map Report](#), [HowTo, Map Archives](#), [General Metadata](#), [FGDC Metadata](#)



[US Conterminous US](#) | [Region 1](#) [Region 2](#) [Region 2 - PR/VI](#) [Region 3](#) [Region 4](#) [Region 5](#) [Region 6 - AK](#) [Region 7](#) [Region 7 - HI](#) [Region 7 - PB1](#)

[Region 7 - PB2](#) [Region 8](#) | [NLM RML 1](#) [RML 2](#) [RML 3](#) [RML 4](#) [RML 5](#) [RML 6](#) [RML 7](#) [RML 8](#) | [MD](#) [Map](#)

1 - 3 | 4 - 10 | 11 - 25 | 26 or More |

Comment

Navigation: Left-click and drag bottom-right to zoom-in  
Features: Compatible with Internet Explorer 7 or Higher, or Firefox 3 or Higher

[Description](#),  
[Sample Print](#),  
[Adobe Reader](#),  
[Adobe Flash](#)  
[Player](#)

Funded By: NLM  
Maintained By: OCCS GIS

**Attachment 7**  
**State Map: Pennsylvania**  
**Network Membership**



Today:  
2011/07/12th



Context: Network Member | Geography: County

[Outreach Project Context](#)

**[ - ] Context**  
[Medically Underserved](#)

[Health Professional Shortage](#)

[Major Health Department](#)

[Network Member](#)

[Public Library Network Member](#)

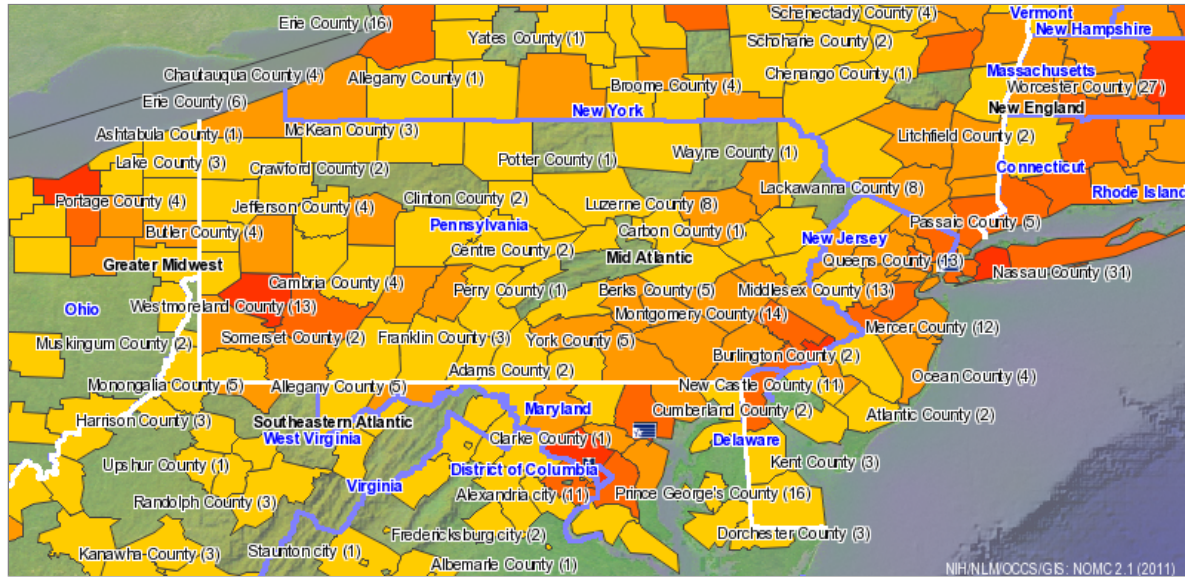
Census Population (1 Race)  
African American # %  
American Indian and Alaska Native # %  
Asian # %  
Caucasian # %  
Hispanic # %  
Native Hawaiian and Pacific Islander # %  
Other # %

Census Population More than 1 Race # %  
Rural # %  
Urban # %

Census Population (Age)  
Less than 17 Years # %  
Between 18-64 Years # %  
More than 65 Years # %

**Geography**  
[ZIP](#) [County](#)

[Map HowTo](#), [Map Report](#), [HowTo](#), [Map Archives](#), [General Metadata](#), [FGDC Metadata](#)



[US Conterminous US](#) | [Region 1](#) [Region 2](#) [Region 2 - PR/VI](#) [Region 3](#) [Region 4](#) [Region 5](#) [Region 6 - AK](#) [Region 7](#) [Region 7 - HI](#) [Region 7 - PB1](#)

[Region 7 - PB2](#) [Region 8](#) | [NLM RML 1](#) [RML 2](#) [RML 3](#) [RML 4](#) [RML 5](#) [RML 6](#) [RML 7](#) [RML 8](#) | MD [Map](#)

1 - 3 | 4 - 10 | 11 - 25 | 26 or More |

Comment

Navigation: Left-click and drag bottom-right to zoom-in  
Features: Compatible with Internet Explorer 7 or Higher, or Firefox 3 or Higher

[Description](#),  
[Sample Print](#),  
[Adobe Reader](#),  
[Adobe Flash](#)  
[Player](#)

Funded By: NLM  
Maintained By: OCCS GIS

**Attachment 8**  
**State Map: New Jersey**  
**Network Membership**

[NN/LM Intranet](#) | [NOMC Intranet](#) | [Outreach Activity](#) | [OARF](#) | [OPD/CHOS](#) | [Project Database](#)



**National Outreach Mapping Center** 2.1 (2011) [Contact](#) | [Feedback](#)

Today:  
2011/07/12th



Context: Network Member | Geography: County

**Outreach Project Context**

**[-] Context**  
[Medically Underserved](#)

[Health Professional Shortage](#)

[Major Health Department](#)

[Network Member](#)

[Public Library Network Member](#)

Census Population (1 Race)

African American # %

American Indian and Alaska Native # %

Asian # %

Caucasian # %

Hispanic # %

Native Hawaiian and Pacific Islander # %

Other # %

Census Population More than 1 Race # %

Rural # %

Urban # %

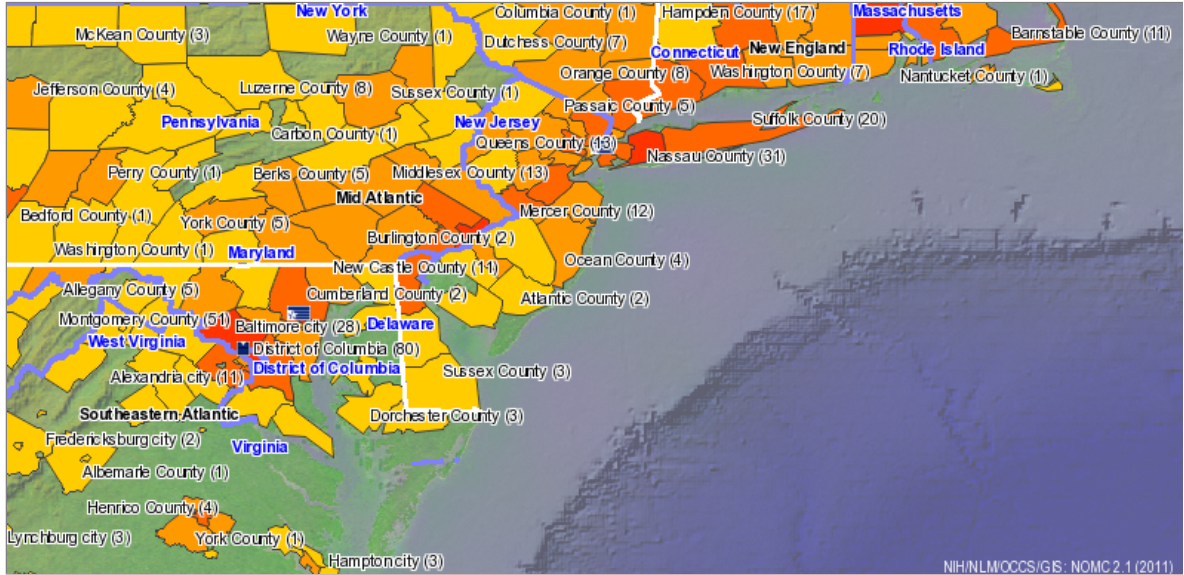
Census Population (Age) Less than 17 Years # %

Between 18-64 Years # %

More than 65 Years # %

**Geography**  
[ZIP](#) [County](#)

[Map HowTo](#), [Map Report](#), [HowTo, Map Archives](#), [General Metadata](#), [FGDC Metadata](#)



[US Conterminous US](#) | [Region 1](#) [Region 2](#) [Region 2 - PR/VI](#) [Region 3](#) [Region 4](#) [Region 5](#) [Region 6](#) [Region 6 - AK](#) [Region 7](#) [Region 7 - HI](#) [Region 7 - PB1](#)

[Region 7 - PB2](#) [Region 8](#) | [NLM RML 1](#) [RML 2](#) [RML 3](#) [RML 4](#) [RML 5](#) [RML 6](#) [RML 7](#) [RML 8](#) | [MD](#) [Map](#)

1 - 3 | 4 - 10 | 11 - 25 | 26 or More |

Comment

Navigation: Left-click and drag bottom-right to zoom-in  
Features: Compatible with Internet Explorer 7 or Higher, or Firefox 3 or Higher

[Description](#),  
[Sample Print](#),  
[Adobe Reader](#),  
[Adobe Flash](#)  
[Player](#)

Funded By: NLM  
Maintained By: OCCS GIS

**Attachment 9**  
**State Map: Delaware**  
**Network Membership**



Today:  
2011/07/12th



Context: Network Member | Geography: County

[Outreach Project Context](#)

**[ - ] Context**  
[Medically Underserved](#)

[Health Professional Shortage](#)

[Major Health Department](#)

[Network Member](#)

[Public Library Network Member](#)

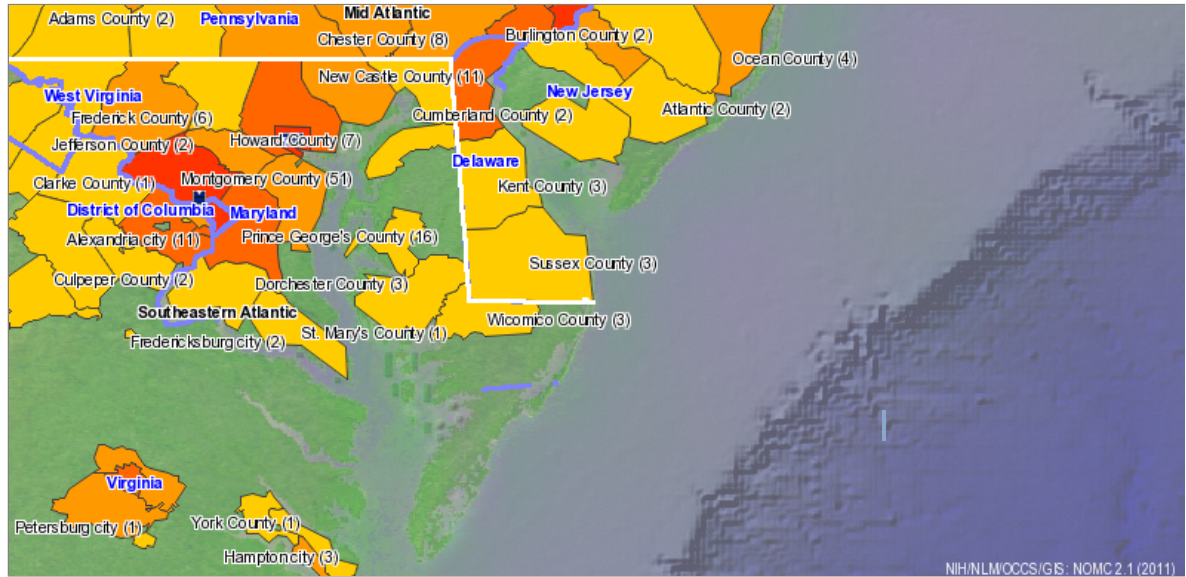
Census Population (1 Race)  
African American # %  
American Indian and Alaska Native # %  
Asian # %  
Caucasian # %  
Hispanic # %  
Native Hawaiian and Pacific Islander # %  
Other # %

Census Population More than 1 Race # %  
Rural # %  
Urban # %

Census Population (Age)  
Less than 17 Years # %  
Between 18-64 Years # %  
More than 65 Years # %

**Geography**  
[ZIP](#) [County](#)

[Map HowTo](#), [Map Report](#), [HowTo](#), [Map Archives](#), [General](#), [Metadata](#), [FGDC Metadata](#)



[US Conterminous US](#) | [Region 1](#) [Region 2](#) [Region 2 - PR/VI](#) [Region 3](#) [Region 4](#) [Region 5](#) [Region 6](#) [Region 6 - AK](#) [Region 7](#) [Region 7 - HI](#) [Region 7 - PB1](#)

[Region 7 - PB2](#) [Region 8](#) | [NLM RML 1](#) [RML 2](#) [RML 3](#) [RML 4](#) [RML 5](#) [RML 6](#) [RML 7](#) [RML 8](#) | [DE](#) [Map](#)

1 - 3 | 4 - 10 | 11 - 25 | 26 or More |

Comment

Navigation: Left-click and drag bottom-right to zoom-in  
Features: Compatible with Internet Explorer 7 or Higher, or Firefox 3 or Higher

[Description](#),  
[Sample Print](#),  
[Adobe Reader](#),  
[Adobe Flash](#)  
[Player](#)

Funded By: NLM  
Maintained By: OCCS GIS

**Attachment 10**

**Report of Government Owned Contractor Held Property**

# REPORT OF GOVERNMENT OWNED, CONTRACTOR HELD PROPERTY

<b>CONTRACTOR:</b> New York University School of Medicine Health Sciences Library	<b>CONTRACT NUMBER</b>  N01-LM-6-3501
<b>ADDRESS</b>  550 First Avenue New York, NY 10010	<b>REPORT DATE:</b>  July 13, 2011
	<b>FISCAL YEAR:</b>  2010

CLASSIFICATION	BEGINNING OF PERIOD		ADJUSTMENTS			END OF PERIOD	
	#ITEMS	VALUE	GFP ADDED	CAP ADDED	DELETIONS	#ITEMS	VALUE
LAND >=\$25K							
LAND <\$25K							
OTHER REAL >=\$25K							
OTHER REAL <\$25K							
PROPERTY UNDER CONST >=\$25K							
PROPERTY UNDER CONST <\$25K							
PLANT EQUIP >=\$25K							
PLANT EQUIP <\$25K							
SPECIAL TOOLING >= \$25K							
SPECIAL TOOLING <\$25K							
SPECIAL TEST EQUIP >=\$25K							
SPECIAL TEST EQUIP <\$25K							
AGENCY PECULIAR >=\$25K							
AGENCY PECULIAR <\$25K							
MATERIAL >=\$25K (CUMULATIVE)							
PROPERTY UNDER MFR >=\$25K	<b>See Sch. I-B</b>	<b>See Sch. I-B</b>	<b>See Sch. I-B</b>	<b>N/A</b>	<b>N/A</b>	<b>See Sch. I-B</b>	<b>Enter Value</b>
PROPERTY UNDER MFR <\$25K							

<b>SIGNED BY:</b>  _____	<b>DATE SIGNED:</b>  _____
--------------------------------	----------------------------------







DEPARTMENT OF HEALTH AND HUMAN SERVICES  
NATIONAL INSTITUTES OF HEALTH

CONTRACTING OFFICERS AUTHORIZATION  
(FOR PROPERTY ACQUISITION)

1. COA NUMBER  
COA No. 25  
2. DATE  
September 2, 2010

3. TO (Contractors name same as on the contract)

4. FROM

New York University School of Medicine

National Library of Medicine, Office of Acquisitions

5. CONTRACT NUMBER

6. CONTRACTOR'S REFERENCE AND/OR REQUEST

N01-LM-6-3501; HHS-N-276-2006-63501C

7. THE PROPERTY LISTED IN THIS LETTER HAS BEEN SCREENED AGAINST THE IDLE INVENTORY AND IS NOT AVAILABLE OR CANNOT BE DELIVERED ON OR BEFORE REQUIRED DATE. AUTHORITY IS GRANTED TO PURCHASE THIS PROPERTY AS A DIRECT CHARGE TO REFERENCED CONTRACT.

8. ITEM	9. QUANTITY	10. UNIT	11. DESCRIPTION	12. ALLOWABLE COST
1	1	EA	Digital Reader: Sony PRS-300BC, Pocket Edition-Navy Blue	149.99
2	1	EA	Digital Reader: Nook 3G + WiFi	199.99
3	1	EA	Apple iPad: 65GB with 3g + WiFi	829.00
4	1	EA	Digital Reader: Kindle Wireless Device; B0015T963C	189.00
5	1	EA	Case: Belkin Neoprene case f/Kindle Digital Reader	24.99

13.  TITLE TO THIS PROPERTY WILL VEST IN THE GOVERNMENT UPON ACQUISITION. THE ENCLOSED GOVERNMENT DECALS WILL BE AFFIXED TO ITEMS INDICATED BY ASTERISK.

14.  TITLE TO THIS PROPERTY WILL VEST IN THE CONTRACTOR UPON ACQUISITION. CONTRACTOR WILL IDENTIFY AND CONTROL THIS PROPERTY IN ACCORDANCE WITH HIS INTERNAL PROCEDURE.

15. SALES TAX, TRANSPORTATION, AND/OR INSTALLATION CHARGES ARE ALLOWABLE BUT MUST BE LISTED SEPARATELY ON YOUR INVOICE. THE ENCLOSED FORM HHS 565, REPORT OF CAPITALIZED NONEXPENDABLE EQUIPMENT, MUST BE COMPLETED PURSUANT TO NIH BILLING INSTRUCTIONS AND FORWARDED WITH YOUR INVOICE. (IF ADVANCE PAYMENTS (Letter of Credit) ARE AUTHORIZED, SEND COMPLETED HHS 565 TO NIH PROPERTY ADMINISTRATOR, BUILDING 13, ROOM 2E65, BETHESDA, MARYLAND 20892.) UNIT PRICES FOR ABOVE PROPERTY MAY NOT EXCEED AUTHORIZED AMOUNT BY MORE THAN 10 PERCENT WITHOUT WRITTEN AUTHORIZATION FROM THE CONTRACTING OFFICER.

16. THIS AUTHORIZATION DOES NOT AMEND ANY TERMS OR CONDITIONS OF THE CONTRACT, INCLUDING THE LIMITATION ON MAXIMUM ACTUAL COST.

17. SPECIAL INSTRUCTIONS

Contractor may use the form (copy attached) for annual property report under this contract (per Section G. of Contract): "Report of Government Owned, Contractor Held Property".

Annual report shall be accompanied by most recent Schedule I-B under this contract (copy attached).

18. ACCOUNTING POINT ADDRESS (Third and fourth digits of CAN number determine accounting point. Check box that corresponds with CAN number digits and send to address listed for that number.)

40     41     42     31     32     33     34  
 CONTRACTS SECTION, FAB    ACCOUNTS PAYABLE SECTION, OAB  
 BUILDING 31, ROOM B1B05A    BUILDING 31, ROOM B1B35

19. ATTACHMENTS

FORM HHS 565     DECALS (list nos.)

20. SIGNATURE OF CONTRACTING OFFICER

Alejandro Navas

